

Publication: The Times Of India Bangalore; Date: Oct 28, 2012; Section: The Address; Page: 42;

GLITTERATI: Mayur Popat

DESIGNED FOR SIMPLICITY AND ELEGANCE

The use of natural materials brings in a refreshing essence to contemporary styling

✿ **A DRIVE DOWN** Mysore Road leads you to a serene and secluded way of life. This is where P S Younus, a senior corporate executive, decided to build a retirement home. Designed by architect Sangeetha Mayur, the outcome is a fine 4,000 sqft house with a striking traditional facade and an internal layout that speaks of modernism.

"The brief was to create an open villa that minimises circulation, yet creates enough privacy, and to keep the spaces distinct in character. This led to the entire concept revolving around a split level that offered different spaces on multiple levels separated by short flights of stairs to zone out one area from another. The theme has been accentuated with a neat, uncluttered look - less ornate and more emphasis on functionality," says Sangeetha.

The open concept relies on distinct demarcations to create different living spaces. Contrasting flooring patterns and skylight in the double-height atrium, a secluded dining space highlighted by a textured wall and stained glass relief are few of the subtle details that distinguishes each space in a unique way.

The decor is tasteful with an ethnic and earthy feel of the wood flooring, and large folding doors in the living room leading to the garden. The transition from the indoors to the outdoors is seamless.

The three bedrooms are arranged at various levels without being a full level apart. An integral part of the home is the interesting play of light. A clear glass skylight ensures ample lighting, creating varied patterns in the living room while a dormer window gives the much-required diffused light in the bedroom. "Cosy niches by the windows for seating provide for the perfect nooks where you can relax," says Bhuvana Younus.

While the facade is quite traditional in character, the layout is that of a contemporary house. "The concept of simple living is captured very well. The three-level design allows plenty of private space and easy access to all rooms. The atrium effect gives you a feeling of larger space and brightness," says Younus.



A traditional facade for an ethnic look

The well-lit bathroom



Distinct demarcations created in the living space

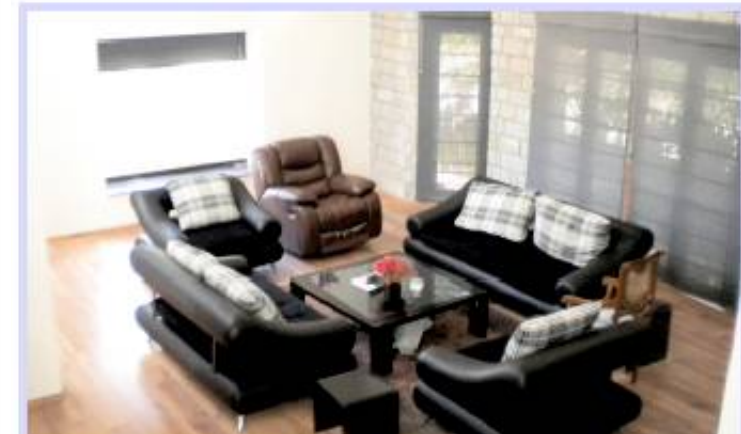


The concept of simple living captured well

The exterior looks elegant in stone



A skylight brings in ample natural light





Courtesy: Archiscap